

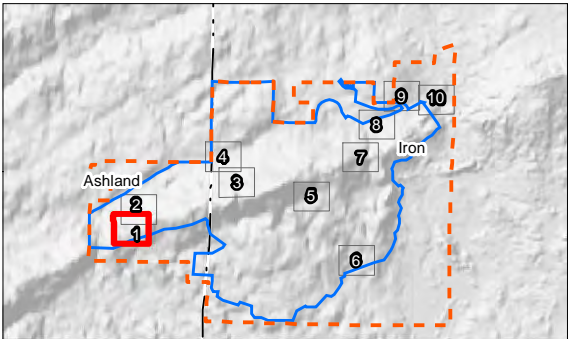


Figure No.  
2  
Title  
Field Delineated Wetlands Map  
WA-01, WA-60, WA-69  
Client/Project  
Gogebic Taconite LLC  
Project Location:  
Ashland and Iron Co., WI  
Prepared by mcp on 2014-07-17  
Technical Review by --- on 2014-03-17  
Independent Review by --- on 2013-xx-xx  
193701133



DRAFT

- Legend
- Project Boundary
  - Property Boundary
  - Gates and Field Office
  - Grid Boundary
  - Navigability Point
  - Field Delineated Stream
  - Sample Point
  - Small Field Identified Wetland
  - Field Delineated Wetland
  - Wisconsin Wetland Inventory
  - Wetland Area
  - NRCS Soil Survey Data
  - Hydric Soil
  - Possible Hydric Inclusions
  - Non-Hydric Soil
  - DNR 24k Hydrography
  - Perennial Stream
  - Intermittent
  - Waterbody
  - Roads & Trails
  - Primary Access Roads
  - Additional Access Roads
  - State Highway or County Rd



Notes  
1. Coordinate System: NAD 1983 StatePlane Wisconsin North FIPS 4801 Feet  
2. Data Sources Include: Stantec, WDNR, WWI, NRCS and Gogebic Taconite  
3. Orthophotography: WROC 2010



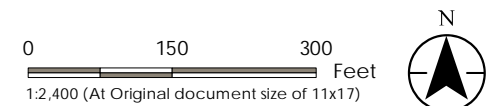
















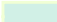








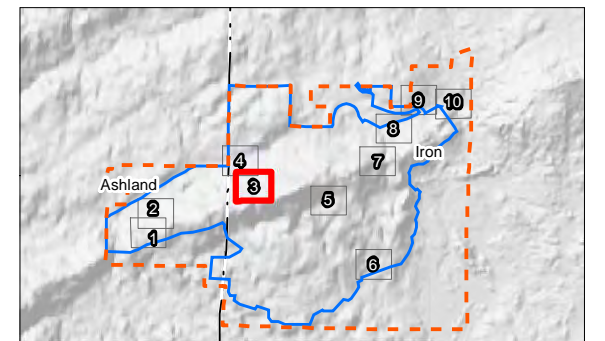
Field Delineated Wetlands Map  
WA-144, WA-149, WA-155

Project Location:	Prepared by	mcp	on	2014-07-17
Ashland and Iron Co., WI	Technical Review by	---	on	2014-03-17
	Independent Review by	---	on	2013-xx-xx
				193701133



**Legend**

	Project Boundary		Primary Access Roads
	Property Boundary		Additional Access Roads
	Gates and Field Office		State Highway or County Rd
	Grid Boundary		
	Navigability Point		
	Field Delineated Stream		
	Sample Point		
	Small Field Identified Wetland		
	Field Delineated Wetland		
Wisconsin Wetland Inventory			
	Wetland Area		
NRCS Soil Survey Data			
	Hydric Soil		
	Possible Hydric Inclusions		
	Non-Hydric Soil		
DNR 24k Hydrography			
	Perennial Stream		
	Intermittent		
	Waterbody		



Notes

1. Coordinate System: NAD 1983 StatePlane Wisconsin North FIPS 4801 Feet
2. Data Sources Include: Stantec, WDNR, WWI, NRCS and Gogebic Taconite
3. Orthophotography: WROC 2010





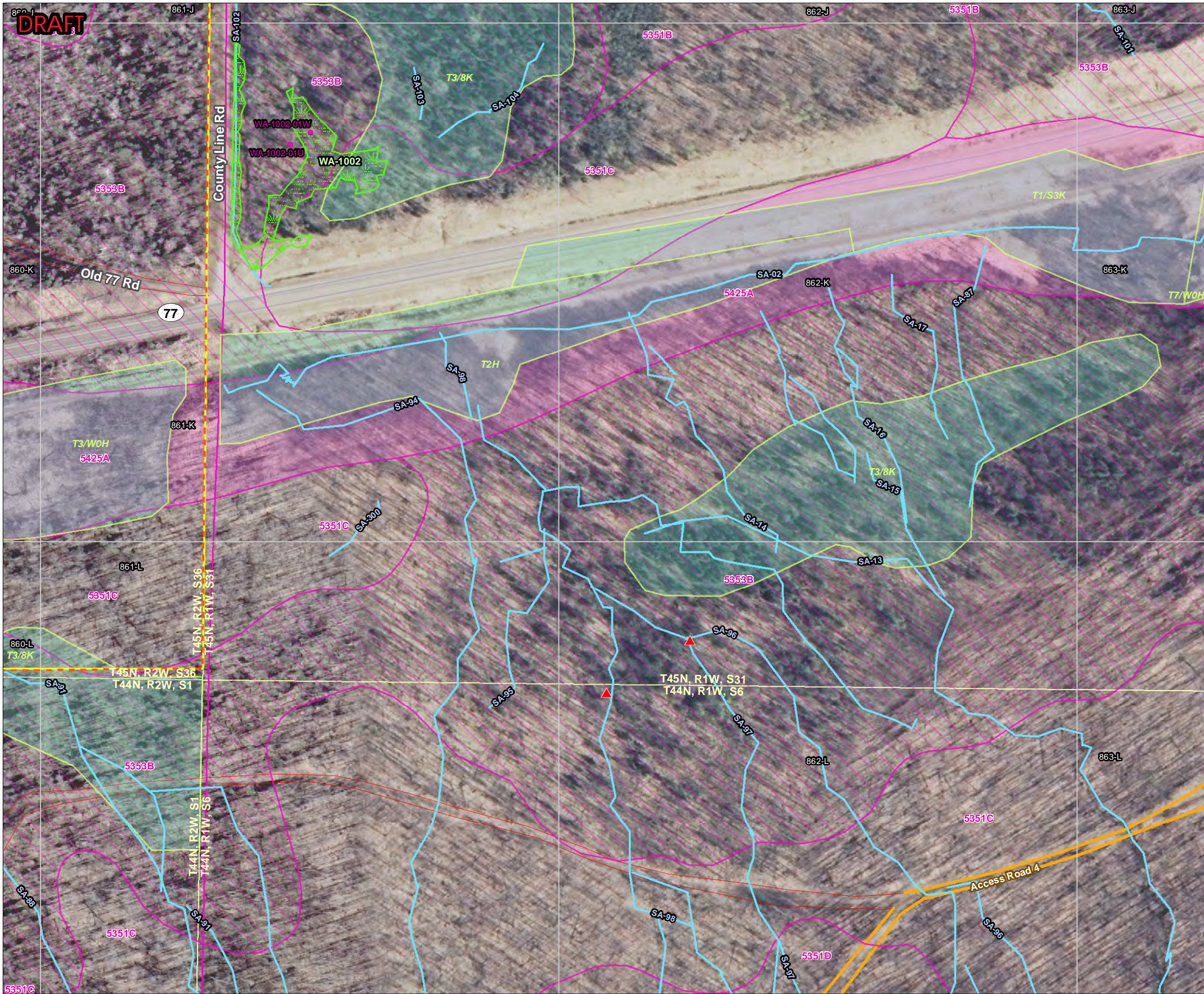
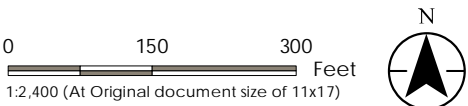


Figure No.  
2  
Title  
Field Delineated Wetlands Map  
WA-1002

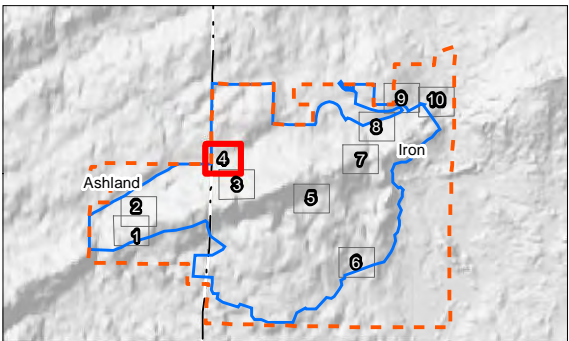
Client/Project  
Gogebic Taconite LLC

Project Location: Ashland and Iron Co., WI  
Prepared by mcp on 2014-07-17  
Technical Review by --- on 2014-03-17  
Independent Review by --- on 2013-xx-xx  
193701133



DRAFT

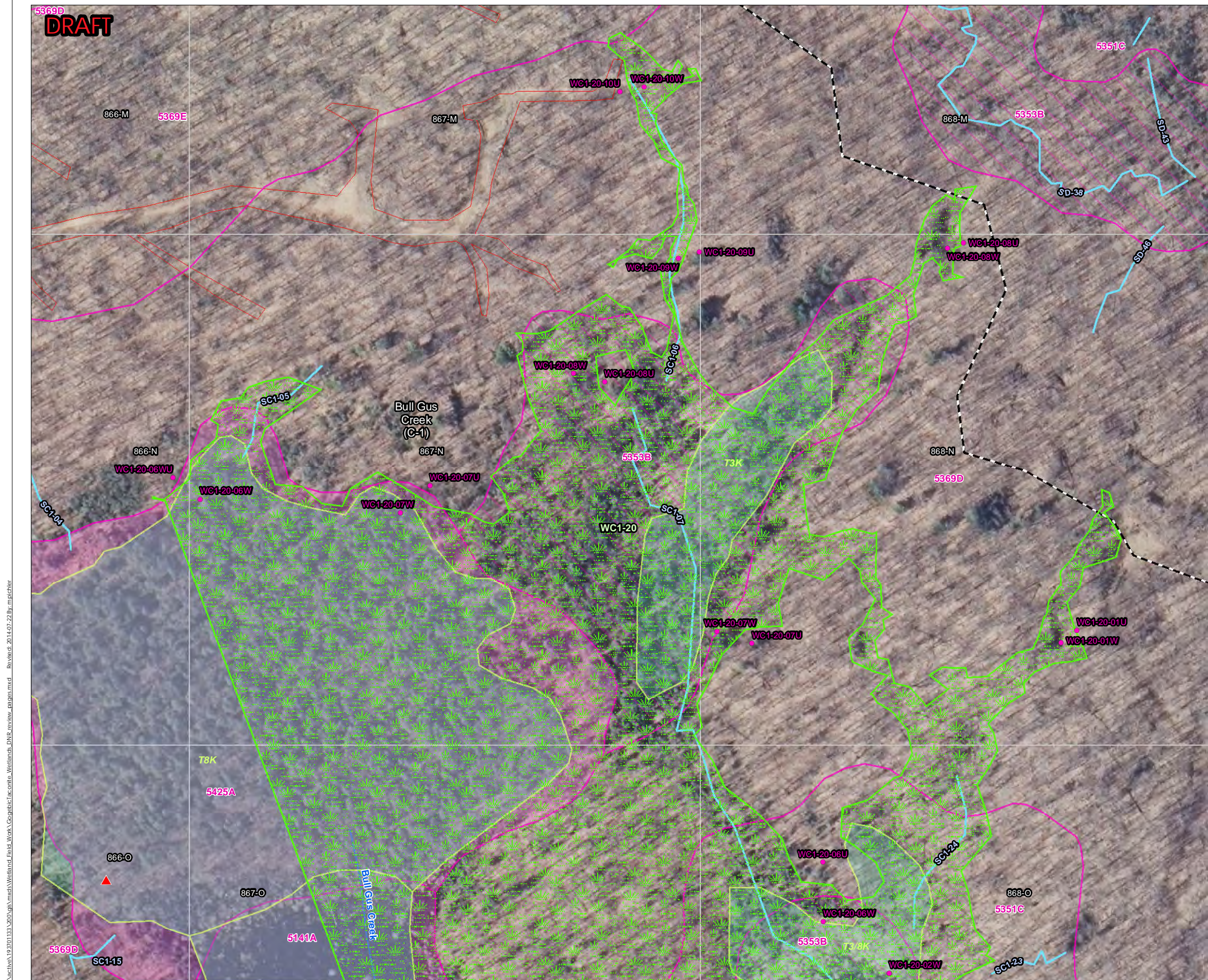
- Legend
- Project Boundary
  - Property Boundary
  - Gates and Field Office
  - Grid Boundary
  - Navigability Point
  - Field Delineated Stream
  - Sample Point
  - Small Field Identified Wetland
  - Field Delineated Wetland
  - Wisconsin Wetland Inventory
  - Wetland Area
  - NRCS Soil Survey Data
  - Hydric Soil
  - Possible Hydric Inclusions
  - Non-Hydric Soil
  - DNR 24k Hydrography
  - Perennial Stream
  - Intermittent
  - Waterbody
  - Roads & Trails
  - Primary Access Roads
  - Additional Access Roads
  - State Highway or County Rd



Notes  
1. Coordinate System: NAD 1983 StatePlane Wisconsin North FIPS 4801 Feet  
2. Data Sources Include: Stantec, WDNR, WWI, NRCS and Gogebic Taconite  
3. Orthophotography: WROC 2010









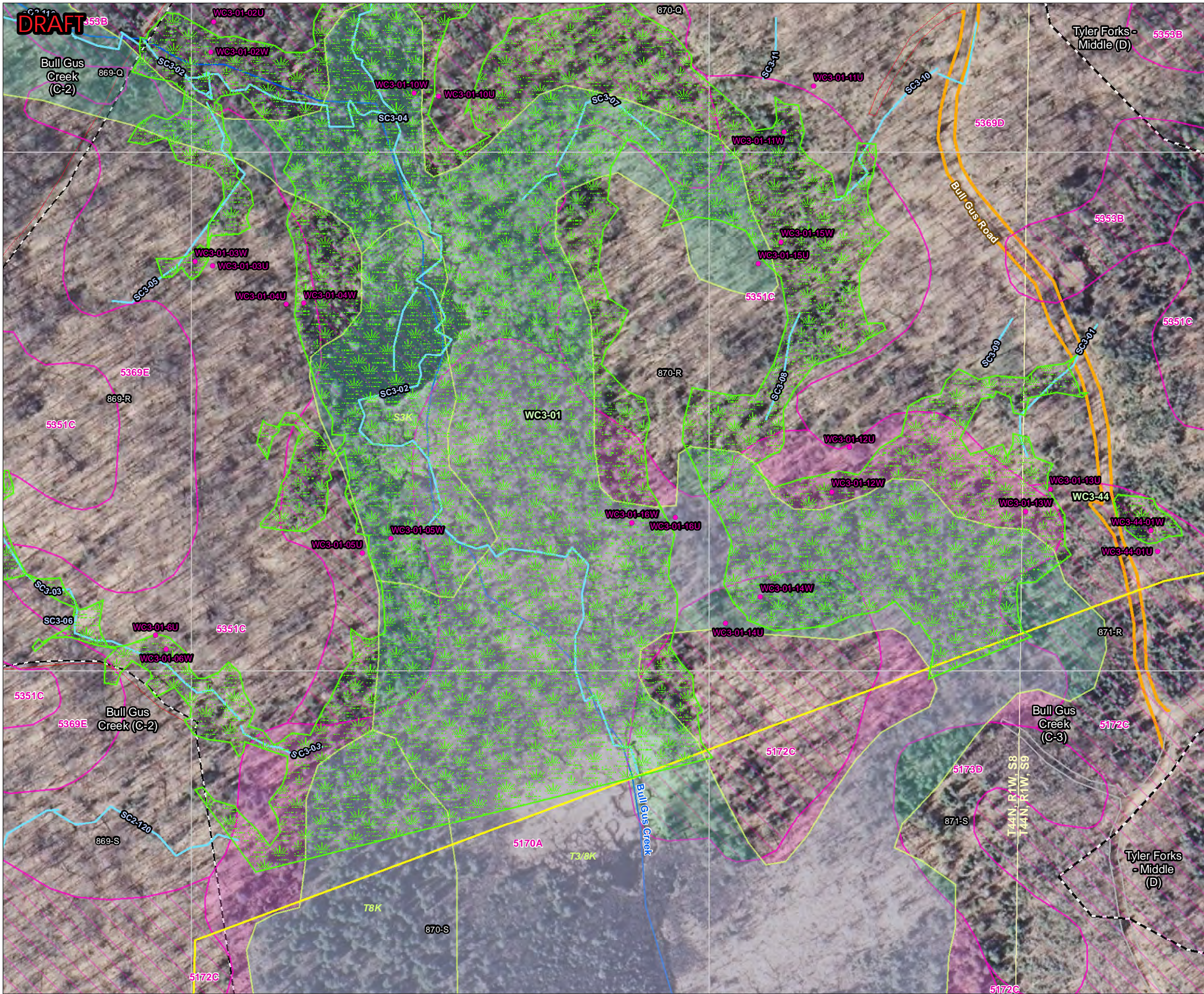


Figure No.  
2

Title  
Field Delineated Wetlands Map  
WC3-01, WC3-44

Client/Project  
Gogebic Taconite LLC

Project Location:  
Ashland and Iron Co., WI

Prepared by  
mcp on 2014-07-17

Technical Review by  
--- on 2014-03-17

Independent Review by  
--- on 2013-xx-xx

193701133



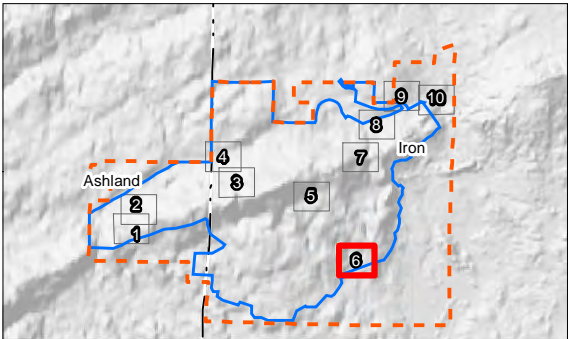
DRAFT

Legend

Project Boundary

Property Boundary

Gates and Field Office

Grid BoundaryNavigability PointSample PointSmall Field Identified WetlandField Delineated WetlandWisconsin Wetland Inventory  
Wetland AreaNRCS Soil Survey Data  
Hydric SoilPossible Hydric InclusionsNon-Hydric SoilDNR 24k Hydrography  
Perennial StreamIntermittentWaterbodyRoads & Trails  
Primary Access RoadsAdditional Access RoadsState Highway or County Rd

- Notes
1. Coordinate System: NAD 1983 StatePlane Wisconsin North FIPS 4801 Feet

2. Data Sources Include: Stantec, WDNR, WWI, NRCS and Gogebic Taconite

3. Orthophotography: WROC 2010





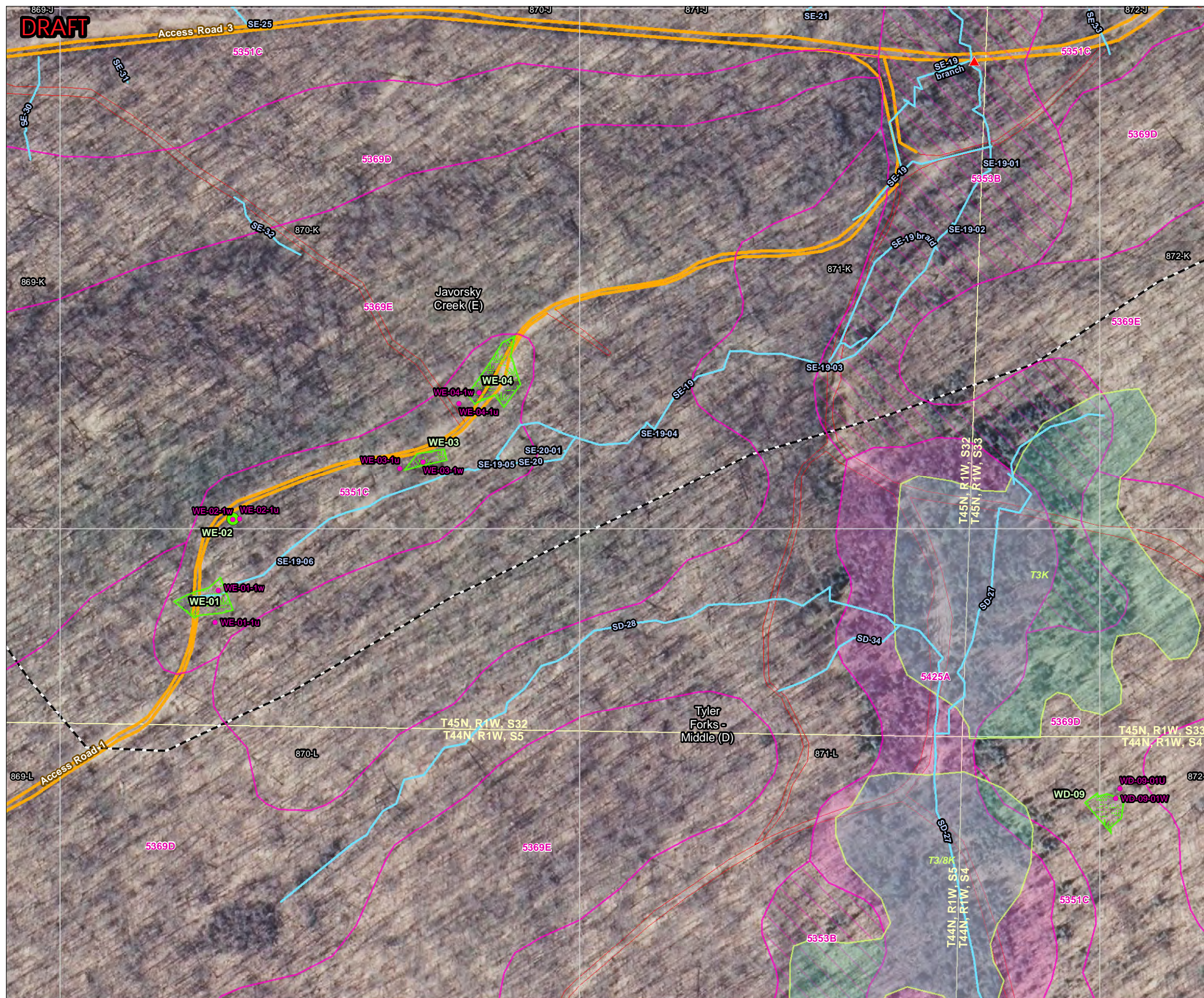


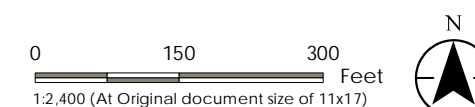
Figure No.

2

Field Delineated Wetlands Map  
WE-01, WE-02, WE-03, WE-04, WD-09

Client/Project  
Gogebic Taconite LLC

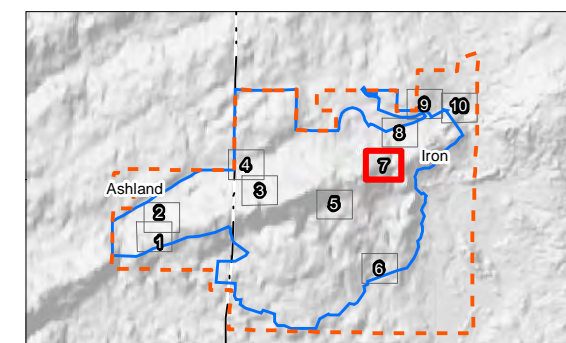
Project Location:	Prepared by	mcp	on 2014-07-17
Ashland and Iron Co., WI	Technical Review by	---	on 2014-03-17
	Independent Review by	---	on 2013-xx-xx
			193701133



DRAFT

Legend

- 
- Project Boundary  
 Property Boundary  
 Gates and Field Office  
 Grid Boundary  
 Navigability Point  
 Field Delineated Stream  
 Sample Point  
 Small Field Identified Wetland  
 Field Delineated Wetland  
 Wisconsin Wetland Inventory  
 Wetland Area  
 NRCS Soil Survey Data  
 Hydric Soil  
 Possible Hydric Inclusions  
 Non-Hydric Soil  
 DNR 24k Hydrography  
 Perennial Stream  
 Intermittent  
 Waterbody



## Notes

- Notes
1. Coordinate System: NAD 1983 StatePlane Wisconsin North FIPS 4801 Feet
  2. Data Sources Include: Stantec, WDNR, WWI, NRCS and Gogebic Taconite
  3. Orthophotography: WROC 2010





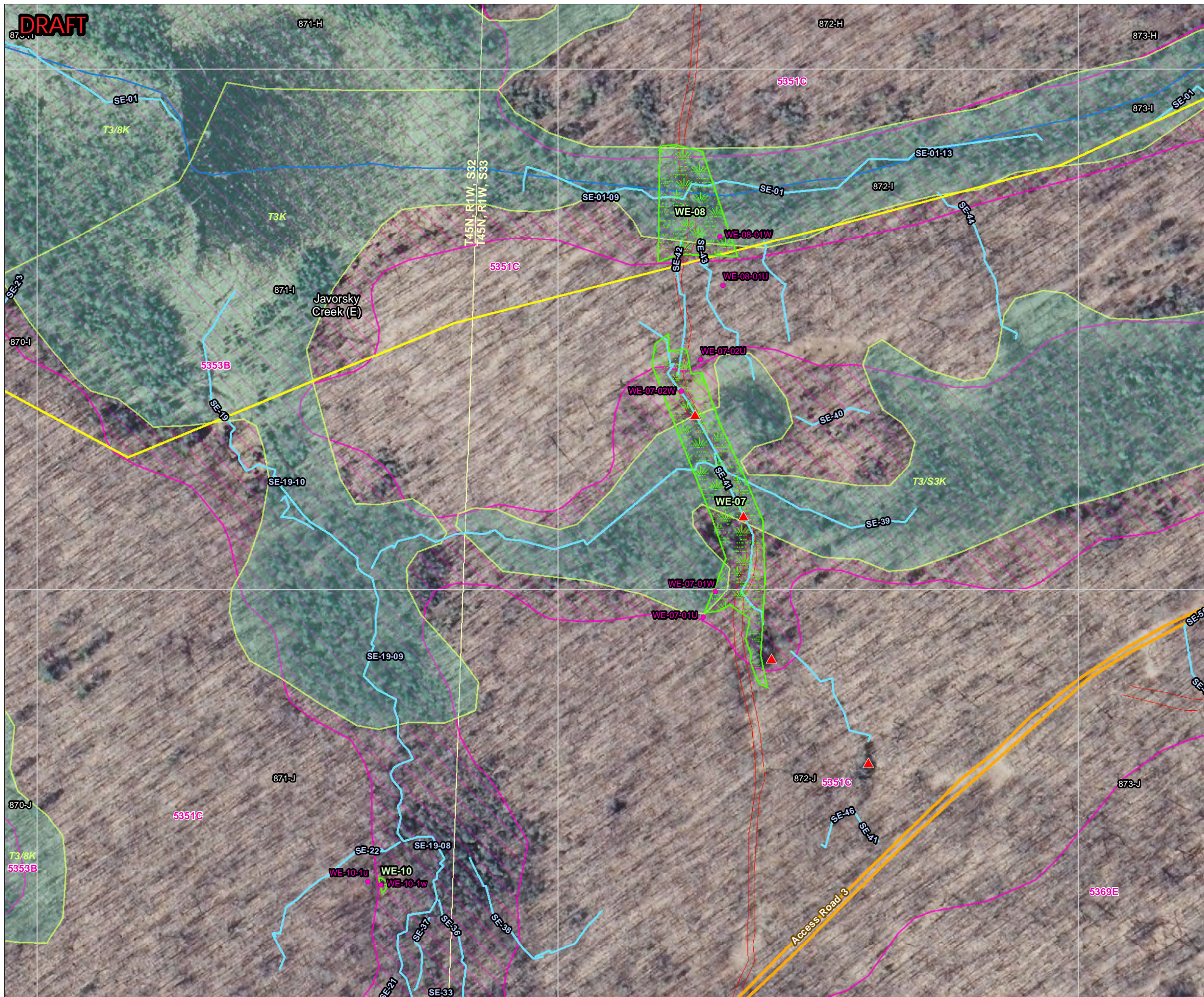


Figure No.

Title

Field Delineated Wetlands Map  
WE-07, WE-08, WE-10












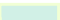
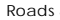


Client/Project  
Gogebic Taconite LLC

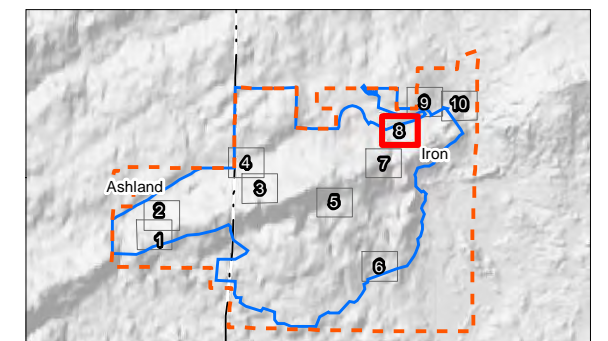
Project Location:	Prepared by	mcp	on	2014-07-17
Ashtand and Iron Co., WI	Technical Review by	---	on	2014-03-17
	Independent Review by	---	on	2013-xx-xx
				193701133



DRAFT

Legend

- 
-  Project Boundary  
 Property Boundary  
 Gates and Field Office  
 Grid Boundary  
 Navigability Point  
 Field Delineated Stream  
 Sample Point  
 Small Field Identified Wetland  
 Field Delineated Wetland  
 Wisconsin Wetland Inventory  
 Wetland Area  
 NRCS Soil Survey Data  
 Hydric Soil  
 Possible Hydric Inclusions  
 Non-Hydric Soil  
 DNR 24k Hydrography  
 Perennial Stream  
 Intermittent  
 Waterbody
- Roads & Trails  
 Primary Access Roads  
 Additional Access Roads  
 State Highway or County Rd



## Notes

1. Coordinate System: NAD 1983 StatePlane Wisconsin North FIPS 4801 Feet
2. Data Sources Include: Stantec, WDNR, WWI, NRCS and Gogebic Taconite
3. Orthophotography: WROC 2010





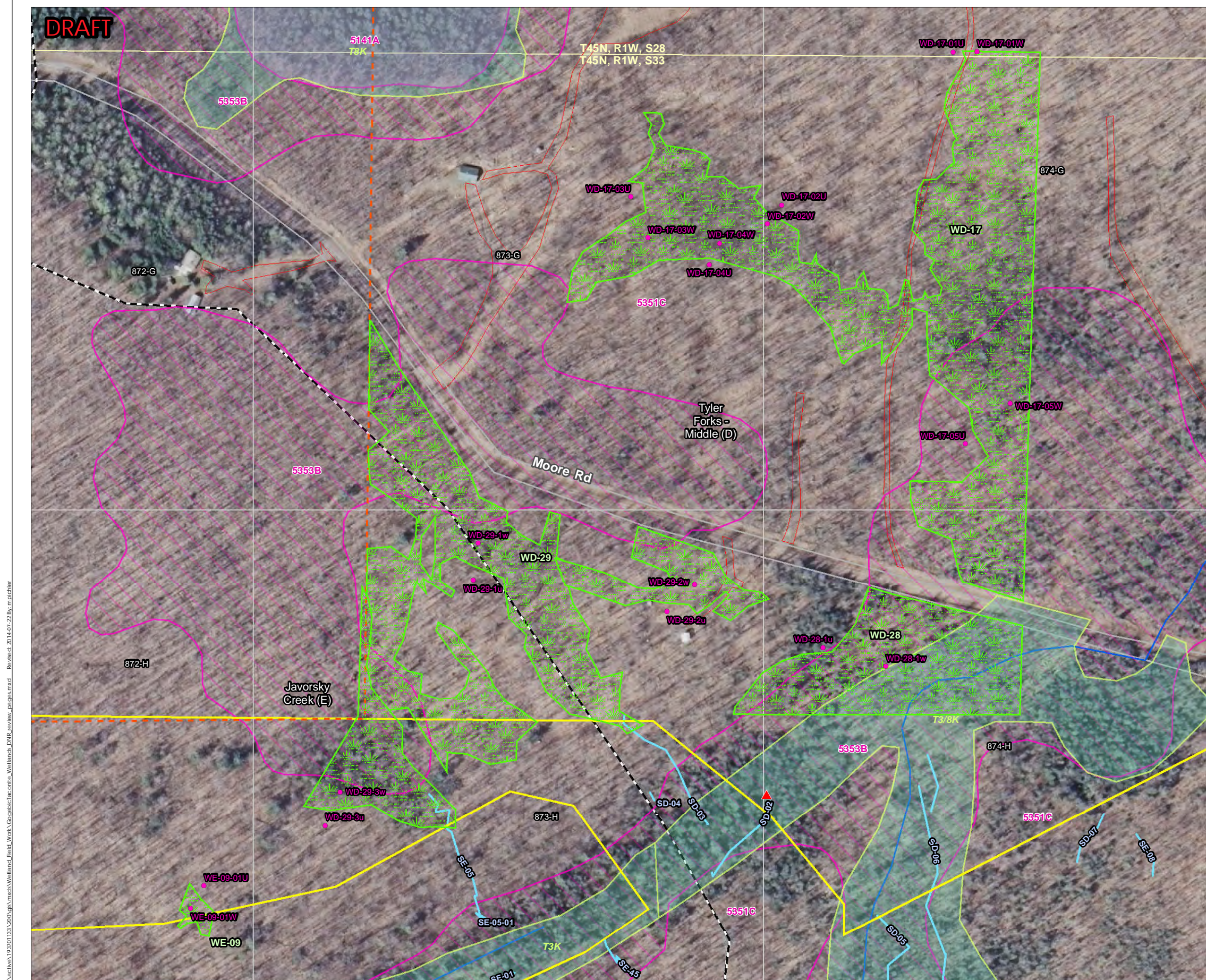


Figure No.

2

Title  
Field Delineated Wetlands Map  
WD-17, WD-28, WD-29, WE-09













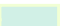

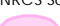




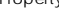
Client/Project  
Gogebic Taconite LLC

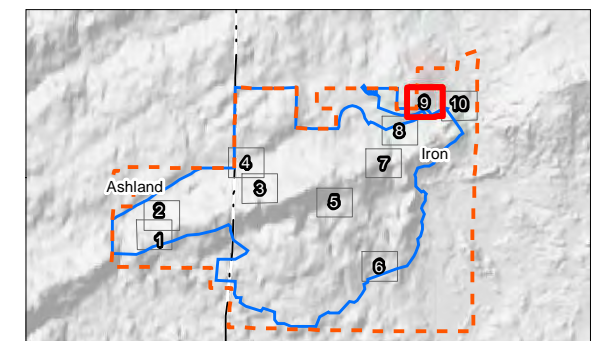
Project Location:	Prepared by	mcp	on	2014-07-17
Ashland and Iron Co., WI	Technical Review by	---	on	2014-03-17
	Independent Review by	---	on	2013-xx-xx
				193701133



DRAFT

Legend

- 
-  Project Boundary  
 Property Boundary  
 Gates and Field Office  
 Grid Boundary  
 Navigability Point  
 Field Delineated Stream  
 Sample Point  
 Small Field Identified Wetland  
 Field Delineated Wetland  
 Wisconsin Wetland Inventory  
 NRCS Soil Survey Data  
 Hydric Soil  
 Possible Hydric Inclusions  
 Non-Hydric Soil  
 DNR 24k Hydrography  
 Perennial Stream  
 Intermittent  
 Waterbody
- Roads & Trails  
 Primary Access Roads  
 Additional Access Roads  
 State Highway or County Rd



## Notes

1. Coordinate System: NAD 1983 StatePlane Wisconsin North FIPS 4801 Feet
2. Data Sources Include: Stantec, WDNR, WWI, NRCS and Gogebic Taconite
3. Orthophotography: WROC 2010







Figure No.  
2

Title  
Field Delineated Wetlands Map  
WD-30

Client/Project  
Gogebic Taconite LLC

Project Location:  
Ashland and Iron Co., WI

Prepared by mcp on 2014-07-17  
Technical Review by --- on 2014-03-17  
Independent Review by --- on 2013-xx-xx

193701133



DRAFT

Legend

Project Boundary

Property Boundary

Gates and Field Office

Grid Boundary

Navigability Point

Field Delineated Stream

Sample Point

Small Field Identified Wetland

Field Delineated Wetland

Wisconsin Wetland Inventory

NRCS Soil Survey Data

Hydric Soil

Possible Hydric Inclusions

Non-Hydric Soil

DNR 24k Hydrography

Perennial Stream

Intermittent

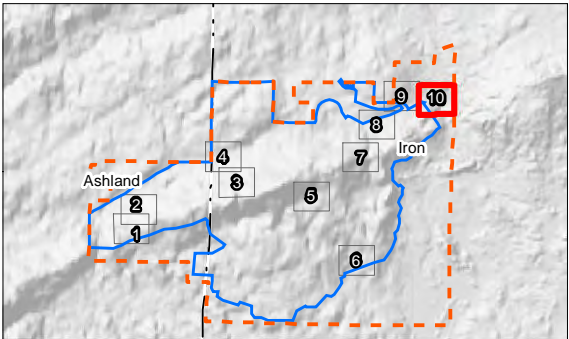
Waterbody

Roads & Trails

Primary Access Roads

Additional Access Roads

State Highway or County Rd



Notes  
1. Coordinate System: NAD 1983 StatePlane Wisconsin North FIPS 4801 Feet  
2. Data Sources Include: Stantec, WDNR, WWI, NRCS and Gogebic Taconite  
3. Orthophotography: WROC 2010

